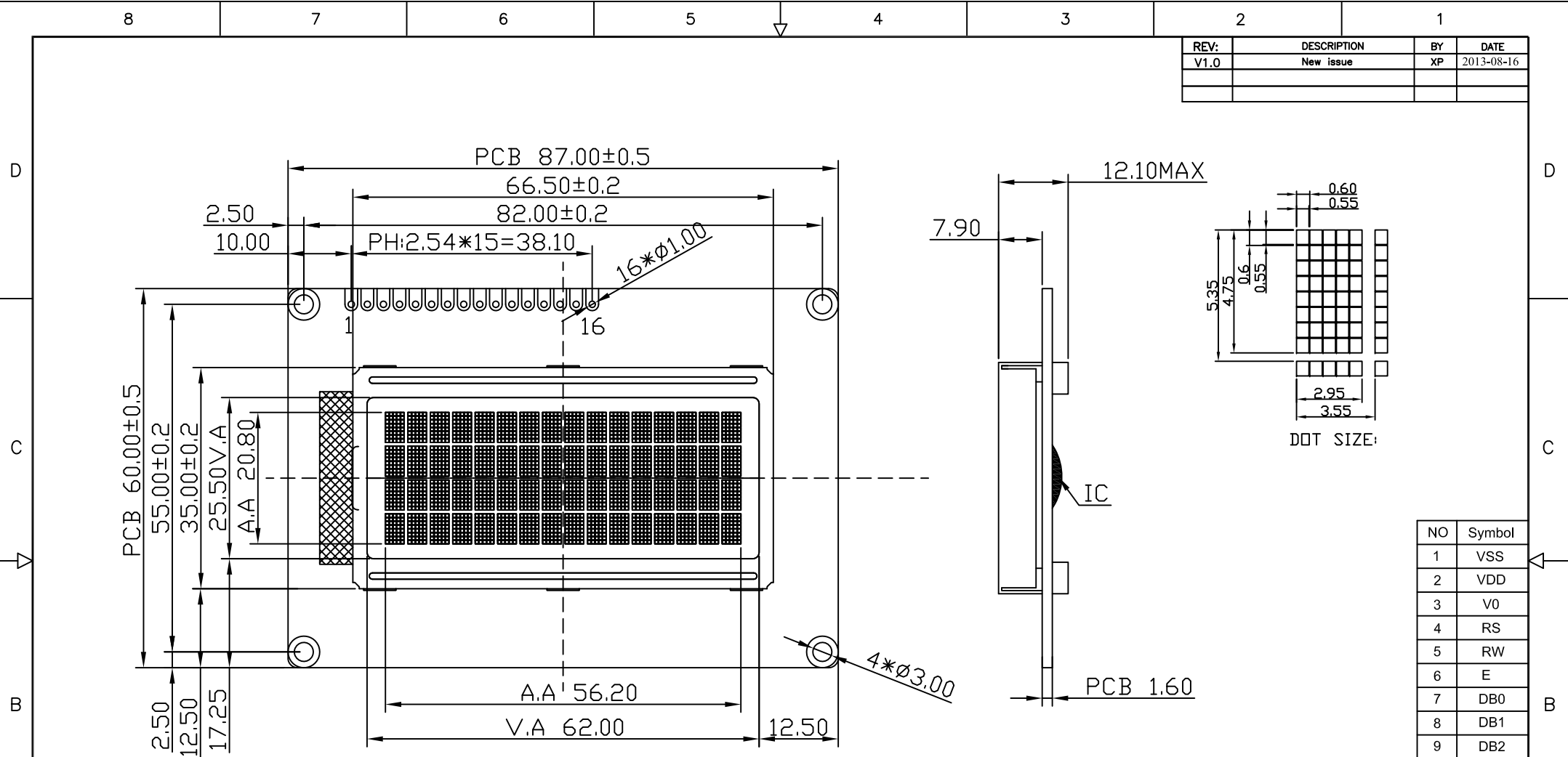



REV:	DESCRIPTION	BY	DATE
V1.0	New issue	XP	2013-08-16



NO	Symbol
1	VSS
2	VDD
3	V0
4	RS
5	RW
6	E
7	DB0
8	DB1
9	DB2
10	DB3
11	DB4
12	DB5
13	DB6
14	DB7
15	A
16	K

- NOTES :
- LCD TYPE: STN-Blue, Negative Transmissive
 - OPERATING VOLTAGE: VDD=5.0V, Vop=5.0V
 - VIEWING DIRECTION: 6 O'CLOCK
 - DRIVE METHOD: 1/16 Duty, 1/5 Bias
 - OPERATING TEMP: -20°C TO +70°C
 - STORAGE TEMP: -30°C TO +80°C
 - CONNECTOR TAPE: Zebra
 - DRIVER IC: AIP31066 or Equivalent
 - BACKLIGHT: White
 - ALL sub-parts and materials of the parts, must comply with the RoHS instructions of EU.

 SINDA DISPLAY TECHNOLOGY CO., LTD.		SHEET: 1 of 1	
APPROVALS		DATE	
DWN	XP	2013-08-16	
CHK			
APP	CJ	2013-08-16	
MODEL NUMBER : SDCB1604-03		VERSION: 1.0 UNITS: MM	
www.sindadisplay.com		GENERAL TOL: ± 0.2 DO NOT SCALE THIS DRAWING.	
		SCALE: 1:1	