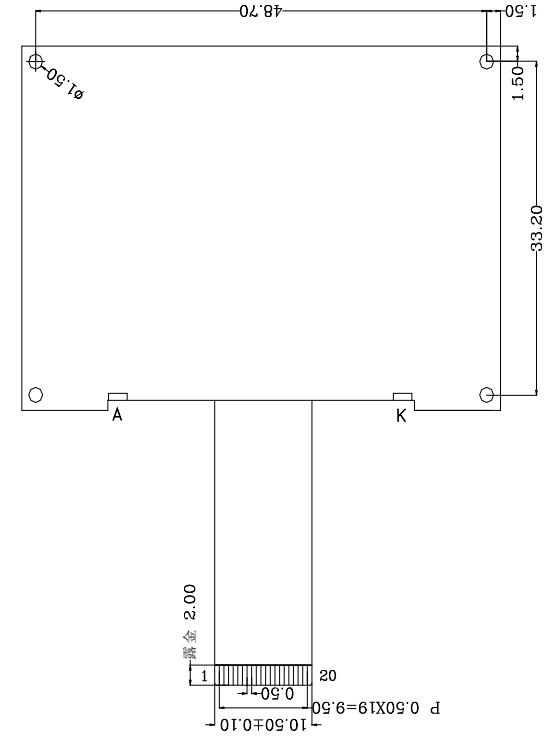
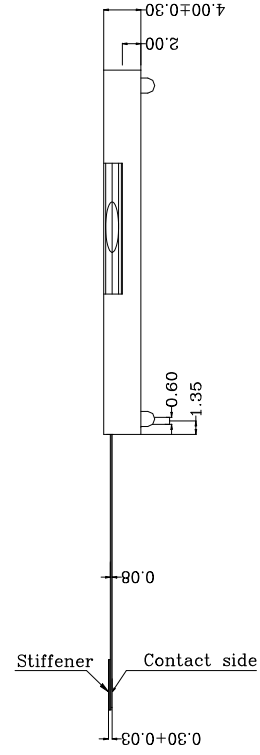
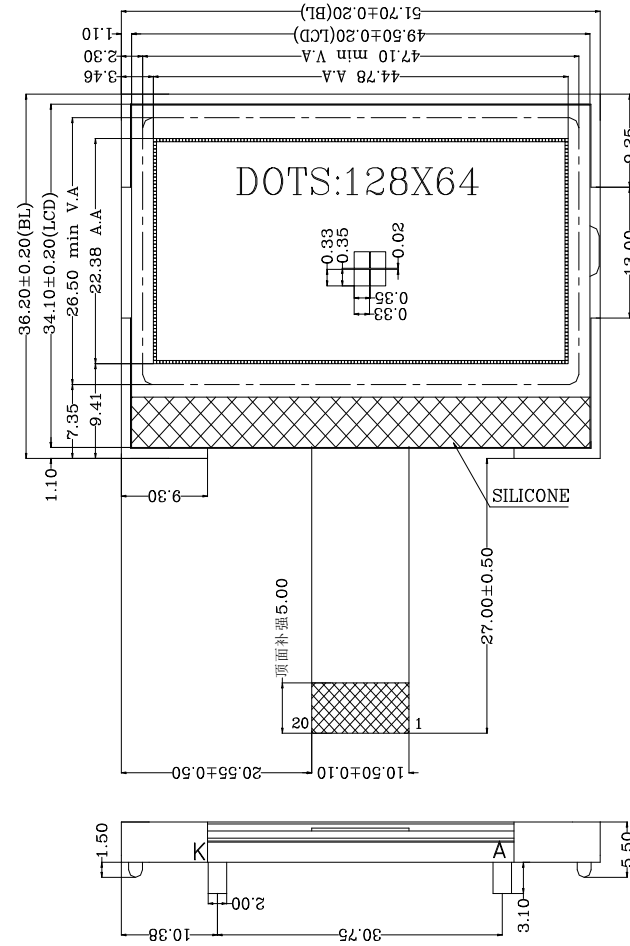
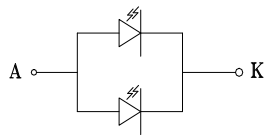


REV:	DESCRIPTION	BY	DATE
V1.0	New issue	SD-06	2015-04-25




- NOTES:
- 1.DISPLAY TYPE: FSTN POSITIVE/NEGATIVE
 - 2.POLARIZER: TRANSLFLECTIVE/TRANSMISSIVE
 - 3.VIEWING DIRECTION: 6:00-CLOCK
 - 4.DRIVE METHOD: 1/64DUTY,1/9BIAS
 - 5.OPERATING VOLTAGE: 3.0V
 - 6.OPERATING TEMP: -20°C TO 70 °C
 - 7.STORAGE TEMP: -30°C TO 80 °C
 - 8.DRIVE: ST7565R
 - 9.UNSIGNED TOLERANCE: ±0.20
 - 10.LED BACKLIGHT: WHITE
 - 11.LED BACKLIGHT OPERATING VOLTAGE: 3.0V
 - 12.LED BACKLIGHT OPERATING ELECTRIC CURRENT: <30MA

CIRCUIT DIAGRAM(LED 1*2=2dies)



接口定义:

PIN NO.	1	2	3	4	5	6	7	8	9	10
SYMBOL	CS	RST	A0	D6	D7	VDD	VSS	VOUT	P3+	P1-
PIN NO.	11	12	13	14	15	16	17	18	19	20
SYMBOL	P1+	P2+	P2-	V4	V3	V2	V1	V0	C86	P/S

 SINDA DISPLAY TECHNOLOGY CO., LTD.				
SHEET: 1 of 1		MODEL NUMBER : SDGG12864-37	VERSION: 1.0	UNITS: MM
APPROVALS	DATE	DO NOT SCALE THIS DRAWING.		
DWN	SD-06	2015-04-25		
CHK				
APP	SD-11	2015-04-25		
www.sindadisplay.com			SCALE: 1:1	