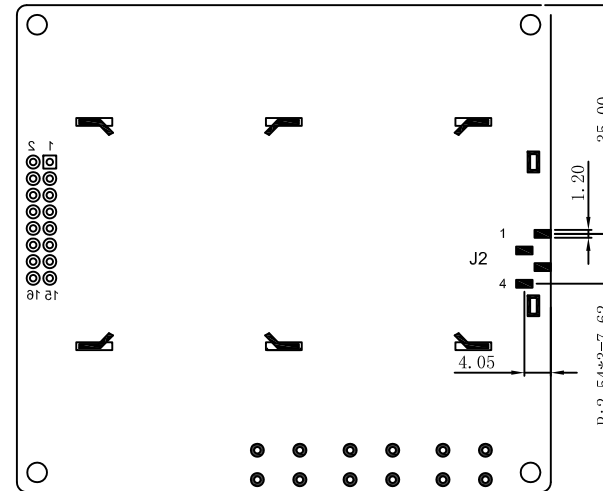
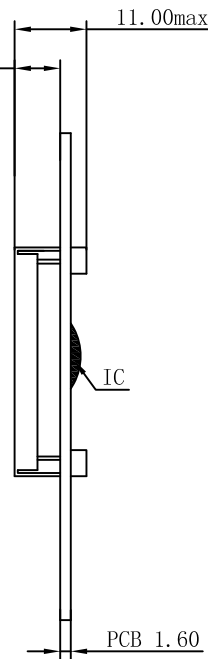
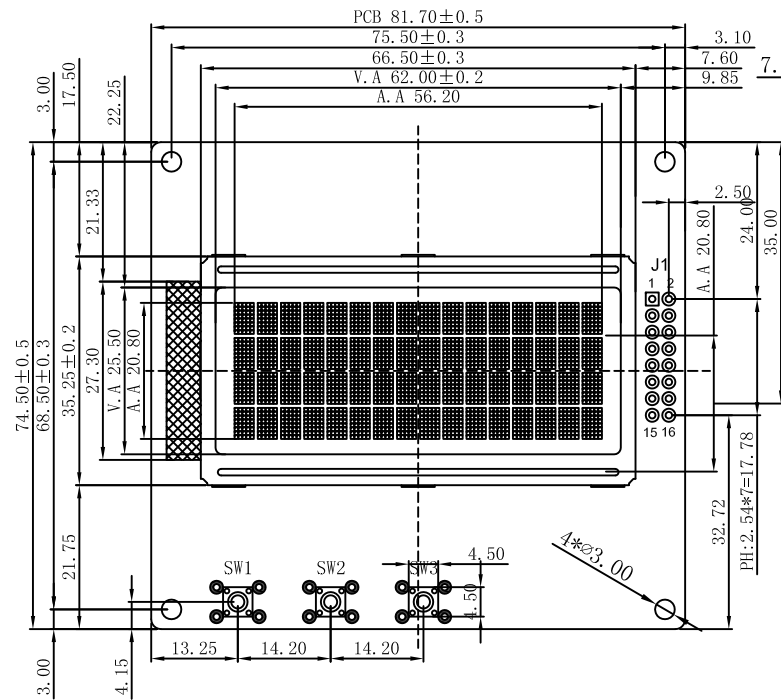


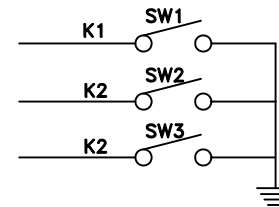
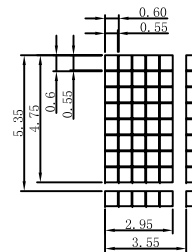
REV:	DESCRIPTION	BY	DATE
V1.0	New issue	XP	2013-08-16



J1	
NO	Symbol
1	N.C
2	RS
3	RW
4	EN
5	D7
6	D6
7	D5
8	D4
9	D3
10	D2
11	D1

J2	
NO	Symbol
12	D0
13	K1
14	K2
15	K3
16	N.C



NOTES :

- |   |   |
|---|---|
| 1. LCD TYPE:  | STN Yellow-Green Positive Transflective |
| 2. OPERATING VOLTAGE:   | VDD=5.0V, Vop=5.0V                      |
| 3. VIEWING DIRECTION:   | 6 O'CLOCK                               |
| 4. DRIVE METHOD:  | 1/16 Duty, 1/5 Bias                     |
| 5. OPERATING TEMP:  | -20°C TO +70°C                          |
| 6. STORAGE TEMP:  | -30°C TO +80°C                          |
| 7. CONNECTOR TAPE:  | Zebra                                   |
| 8. DRIVER IC:   | AIP31066 or Equivalent                  |
| 9. BACKLIGHT:   | Yellow-Green                            |
| 10. ALL sub-parts and materials of the parts, must comply with the RoHS instructions of EU. |   |

		<b>SINDA DISPLAY TECHNOLOGY CO., LTD.</b>	
SHEET: 1 of 1		MODEL NUMBER :	VERSION: 1.0
APPROVALS		DATE	UNITS: MM
DWN	XP	2013-08-16	DO NOT SCALE THIS DRAWING.
CHK			
APP	CJ	2013-08-16	
SDCB1604-04			SCALE: 1:1
www.sindadisplay.com			

