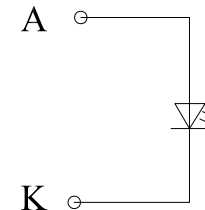
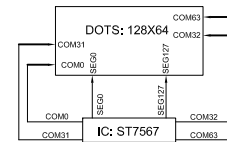
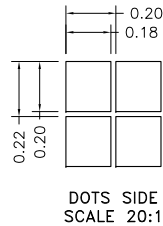
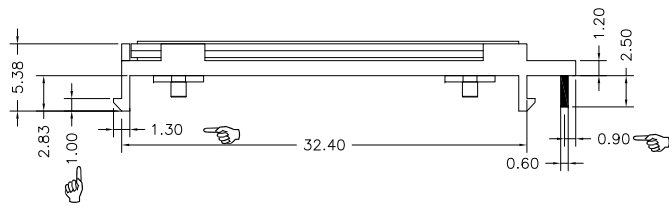
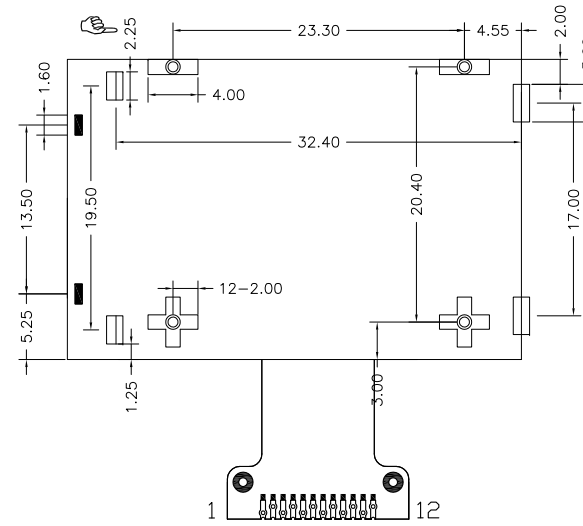
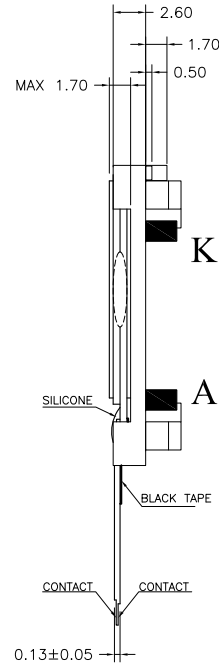
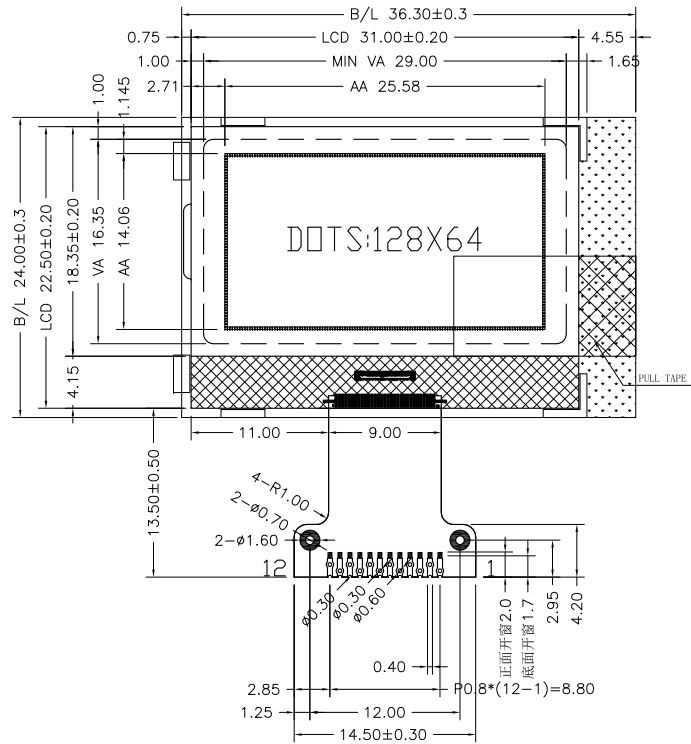


REV:	DESCRIPTION	BY	DATE
V1.0	New issue	SD-02	



PIN	SYMBOL
1	/CS1
2	/RES
3	A0
4	D6(SCLK)
5	D7(SDA)
6	VDD
7	VSS
8	VO
9	XV0
10	VG
11	NC
12	NC

NOTES :

- LCD TYPE: FSTN Positive Transmissive
- OPERATING VOLTAGE: VDD=3.0V, Vop=8.50±0.30V
- VIEWING DIRECTION: 6 O'CLOCK
- DRIVE METHOD: 1/65 Duty, 1/9 Bias
- OPERATING TEMP: -10°C TO +60°C
- STORAGE TEMP: -20°C TO +70°C
- CONNECTOR TAPE: FPC
- DRIVER IC: ST7567
- BACKLIGHT: 1 pcs LED White, VF=3.1±0.2V, IF=15mA
- ALL sub-parts and materials of the parts, must comply with the RoHS instructions of EU.

		SINDA DISPLAY TECHNOLOGY CO., LTD.	
SHEET: 1 of 1		MODEL NUMBER : SDGG12864-142	VERSION: 1.0
APPROVALS	DATE	UNITS: MM	
DWN	SD-02	GENERAL TOL: ± 0.2	
CHK	SD-11	DO NOT SCALE THIS DRAWING.	
APP	SD-11	SCALE: 1:1	
		www.sindadisplay.com	