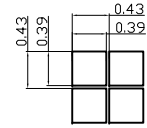
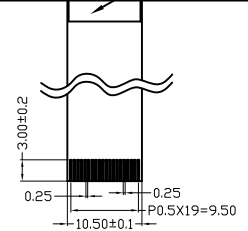
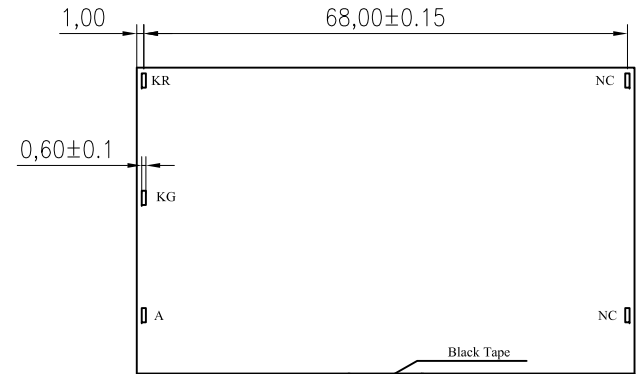
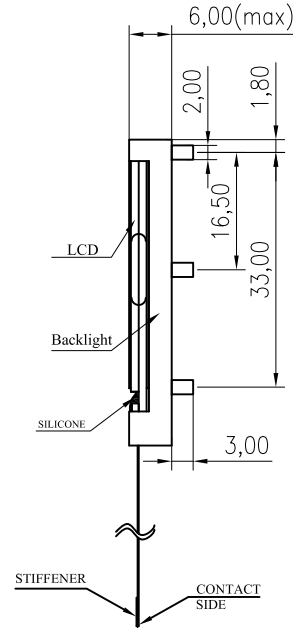
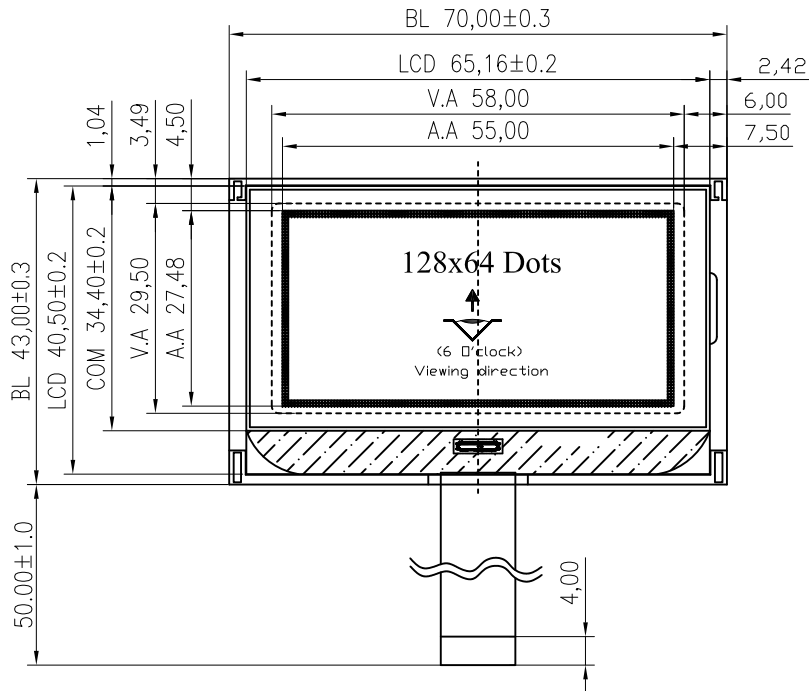
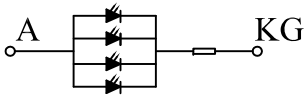


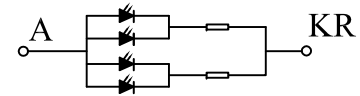
REV:	DESCRIPTION	BY	DATE
V1.0	New issue	Mike	2016-08-31



Dots detail
scale 10 : 1



Backlight Circuit Diagram
GREEN (1*4=4 dies)



Backlight Circuit Diagram
RED (1*4=4 dies)

NO	Symbol
1	NC
2	NC
3	NC
4	NC
5	NC
6	VG
7	NC
8	NC
9	XV0
10	V0
11	NC
12	NC
13	VSS
14	VDD
15	SDA
16	SCLK
17	A0
18	/RES
19	/CS1
20	NC

NOTES :

- LCD TYPE: FSTN, Positive Transflective
- OPERATING VOLTAGE: VDD=3.0V, Vop=9.0V
- VIEWING DIRECTION: 6 O'CLOCK
- DRIVE METHOD: 1/65 Duty, 1/9 Bias
- OPERATING TEMP: -20°C TO +70°C
- STORAGE TEMP: -30°C TO +80°C
- CONNECTOR TAPE: FPC
- DRIVER IC: ST7567 or Equivalent
- BACKLIGHT: 4 pcs LED GREEN, VF=3.1±0.2V, IF=15x4mA
4 pcs LED RED, VF=3.1±0.2V, IF=10x4mA
- ALL sub-parts and materials of the parts, must comply with the RoHS instructions of EU.

		SINDA DISPLAY TECHNOLOGY CO., LTD.	
SHEET: 1 of 1		MODEL NUMBER : SDGG12864-69	VERSION: 1.0 GENERAL TOL: ± 0.2
APPROVALS	DATE	UNITS: MM	
DWN Mike	2016-08-31	DO NOT SCALE THIS DRAWING.	
CHK		www.sindadisplay.com	
APP CJ	2016-08-31		