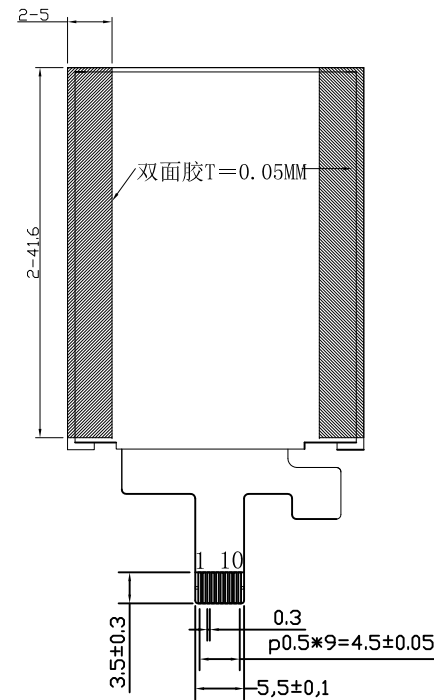
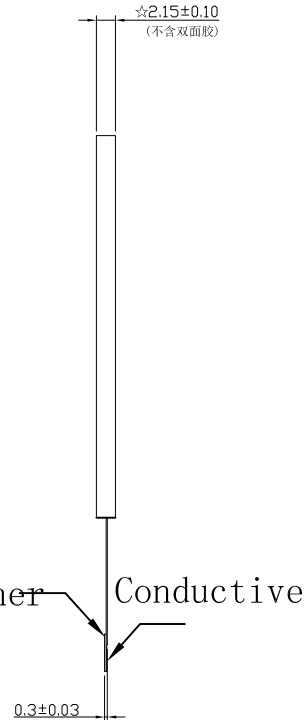
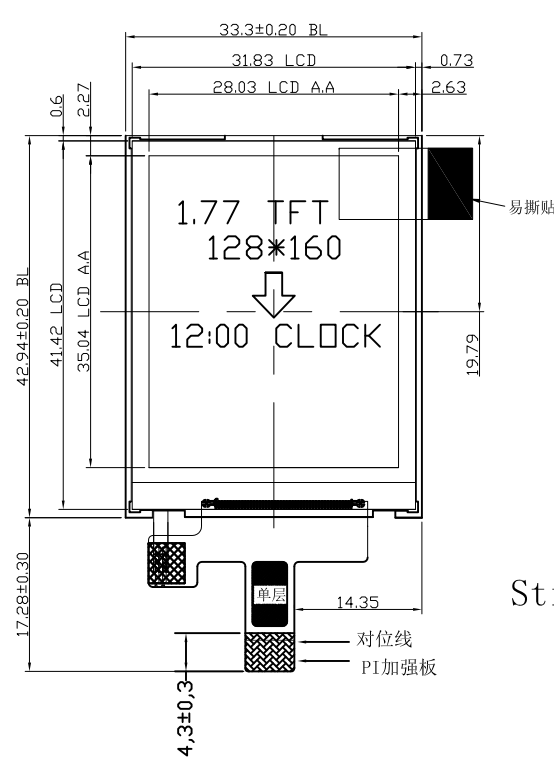
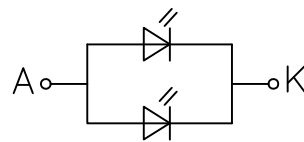


REV:	DESCRIPTION	BY	DATE
V1.0	NEW	SD-03	



LED CIRCUIT DIAGRAM:



FPC

展开出货

PIN	DESCRIPTION
1	K
2	A
3	VDD3.3
4	TE
5	CS
6	RESET
7	D/CX
8	SCLK
9	SDA
10	GND

Notes:

- 1). Display mode: 65K TFT/Transmissive
- 2). Viewing angle: 12 O'clock
- 3). Operating temp.: -20°C~+70°C  
Storage temp.: -30°C~+80°C
- 4). IC: ST7735S
- 5). Backlight: 2 chip White LED ,in Parallel
- 6). General Tolerance: ±0.20.
- 7). Rohs Compliancy.
- 8). with mark "( )" are referenced

		<b>SINDA DISPLAY TECHNOLOGY CO., LTD.</b>	
SHEET: 1 of 1		MODEL NUMBER : <b>SDT01801-A10</b>	VERSION: 1.0 GENERAL TOL: ± 0.2 DO NOT SCALE THIS DRAWING.
APPROVALS	DATE	UNITS: MM	
DWN	SD-03 2018-11-21	SCALE: 1:1	
CHK			
APP	SD-11 2018-11-21		
		<a href="http://www.sindadisplay.com">www.sindadisplay.com</a>	