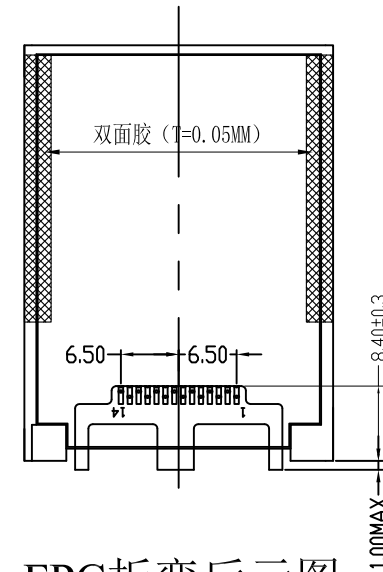
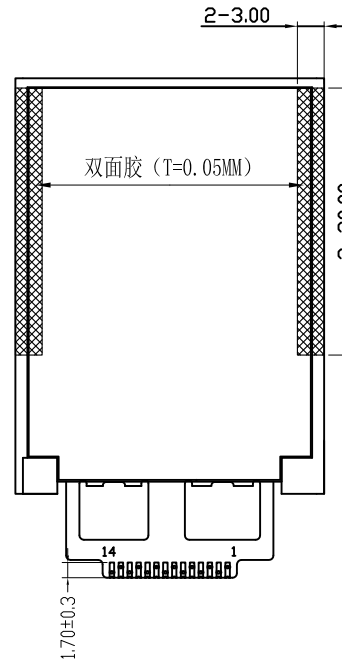
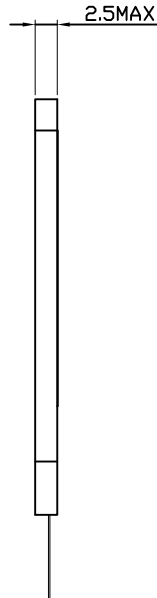
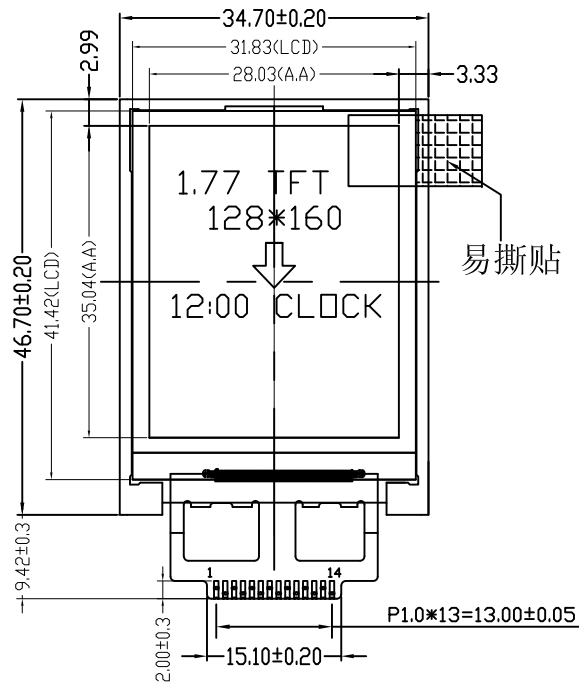
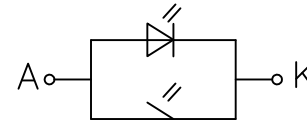


REV:	DESCRIPTION	BY	DATE
V1.0	NEW	SD-03	



### FPC折弯后示图 展开出货

LED CIRCUIT DIAGRAM:



Notes:

- 1). Display mode: 65K TFT/Transmissive
- 2). Viewing angle: 12 O'clock
- 3). Operating temp.: -20°C~+70°C  
Storage temp.: -30°C~+80°C
- 4). IC:GC9106
- 5). Backlight: 2 chip White LED ,in Parallel
- 6). General Tolerance:±0.20.
- 7). Rohs Compliancy.
- 8). with mark "()" are referenced

14PIN DESCRIPTION		
Pin. NO.	Name	定义说明
1	GND	接主板GND
2	A0	数据位1
3	SCK	同步时钟信号
4	SDA	同步数据信号
5	NC	悬空
6	CS	片选
7	\RESET	复位
8	LED_K	背光负极
9	LED_A	背光正极
10	VDDA/2.8V	工作电压
11	VDDIO/1.8V	数据电压
12	GND	接主板GND
13	NC	悬空
14	NC	悬空

<b>SINDA DISPLAY TECHNOLOGY CO., LTD.</b>				
SHEET: 1 of 1		MODEL NUMBER : SDT01802-A14	VERSION: 1.0	UNITS: MM
APPROVALS	DATE	GENERAL TOL:± 0.2		
DWN SD-03	2018-11-21	DO NOT SCALE THIS DRAWING.		
CHK		www.sindadisplay.com		
APP SD-11	2018-11-21			
		SCALE: 1:1		